

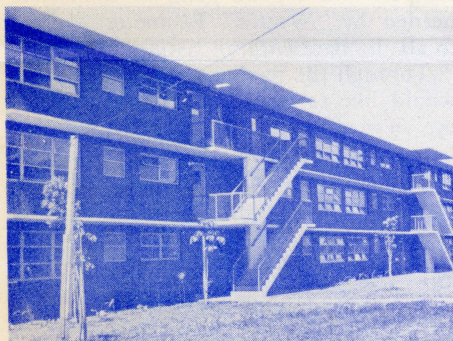


# PALAMA OPEN DOOR

Vol. 2, No. 2

HONOLULU, HAWAII

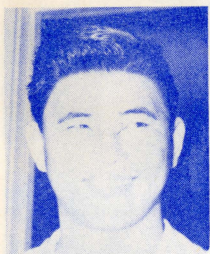
October 1952



*HERE'S WHERE Palama's new neighbors will live. 364 families will begin moving in, late in October. Palama wishes to welcome all of you and hopes that you will come and join us in our many activities.*

## MATSUO PROMOTED TO NEW JOB AS PHYSICAL DIRECTOR

The physical education department long in need of a director has taken a new lease on life under the capable guidance of Kiyoshi Matsuo, according to Walt Ehlers, director of Palama.



Kiyoshi Matsuo

football.

Kiyoshi has an extensive sports background and has played both football and basketball during his high school and college years.

He and his wife Helen have a little daughter, Laine Allison, 18 months old.

## PALAMA BEGINS TO DRESS-UP; PLANS MANY IMPROVEMENTS

"Sharp" is the word for Palama these days as the painting and renovation program gets underway.

The James A. Rath auditorium is completely finished and is now open to the public. The completion of this work has been the dream of Shunzo Sakamaki and the other members of the Friends of Palama Club.

### PALAMA NAMES RATH NUMBER ONE; OTHER VOLUNTEERS HONORED

Robert Rath, president of Palama's board, is an outstanding volunteer according to the committee who unanimously chose him as Volunteer-of-the-Month.



Robert Rath

Bob not only works diligently at his board job, but also finds time to serve as leader of the Palama Dukes' club.

Palama has other devoted friends who give of their time. The staff wishes to honor the following volunteers and you will see pictures of them in future issues of the Open Door: John Chong, Lorin Gill, Bung Yen Wong, Thomas Suzuki, Andrew Kaopuiki, Patrick Oka, Reginald Hailele, Gaylord Waa, "Jackie" Rath, June Ishimoto, Hiroko Hanagami, Gwendolyn Kubo and Thelma Murakami.

### PRE-SCHOOL DRAWS BIG PTA CROWD

With an attendance of over 50 mothers and fathers, the Palama pre-school PTA held its first meeting on September 26 at 7:30 p.m. in the main Nursery school building.

Mrs. Cornelius Mulder spoke on the emotional needs of children and presented a movie entitled "Preface to Life."

### PRESIDENT RESPONSIBLE

Dr. Sakamaki, club prexy responsible for raising almost \$6000 for the renovating said, "Please don't thank me. The work of raising the money was done by the members, the staff and friends."

The president of the club now, Ralph Melemai, is carrying forward the tradition set by this club in providing funds for items not covered by the Community Chest.

### OTHER IMPROVEMENTS PLANNED

Other renovations on schedule are the reading and game rooms, the lobby, and the membership and group work office.

Upstairs in the group work building the canteen and sewing room are going to be redecorated. The Inter-Club Council has been asked for ideas on decoration and color scheme and as soon as those ideas are presented, the work will begin.

### NEW LOOK THIS SUMMER

The Pre-School building and the Music school were repainted during the summer and readers are urged to "come in and see how nice they look," says Walt Ehlers, Director.

Thanks go to Bob Freitas and Messrs. Okamoto, Heckford, Iona and Pinho for a job well done, according to the Director.

The murals have had a lot of publicity in the local newspapers. They were painted by David Asherman, Isaac Matsuoka and Ray Shigaki of the "U" of Hawaii Art department.

*Continued on page 3*



## INTRODUCING TO YOU



"I just love gardening," said Julia Desha as the photographer caught her at her favorite activity.

Julia has a way about her that makes everything she does seem like her favorite activity, but we know from the way her garden looks that she really loves to grow flowers.

### *Julia's Well Known*

Of course all Palamaites know Julia Desha, but perhaps some of you didn't know that Julia has been with Palama Settlement for 38 years, coming in April of 1914. She started as secretary to James A. Rath and in that position has watched Palama grow and change over the years.

### *A Kamaaina, Truly*

From a Honolulu family, but with her childhood spent in Kona, Julia is really a Kamaaina. She came back to Honolulu as a young adult and lived for a while with the James Raths.

### *David Desha Appears*

In February of 1921, Julia married David Desha of Maui and they have lived in Honolulu ever since.

Palama wouldn't know what to do without Julia Desha and we hope that Julia will find that feeling mutual for many years to come.

## Pre-School Full; Waiting List Open

A full enrollment of 55 children marks the opening of Palama Pre-School. The school is under the direction of Miss Esther So.

Miss So says that the school emphasizes a well-rounded program and seeks to promote emotional, mental and physical growth in the child through music, art, excursions and supervised play.

Place your child's name on the waiting list if you are interested.

## SURVEY RESULTS IN PROGRAM CHANGES AT PALAMA

The recent survey made by Palama with the cooperation of Dr. Andrew Lind's department at the University of Hawaii and Farrington and Kalakaua schools covered some 3185 people.

It has given Palama a good idea of what teen-agers and adults want. Program ideas ranged from co-ed volleyball, swimming and social and folk dancing to classes in various subjects.

Lack of adequate program for adults was brought out. Many adults expressed the idea that "Palama is a place for kids."

The results of the survey, according to Walt Ehlers, Director, have caused fall program plans to be revised and as many suggestions as possible have been followed.

## Dance Classes Popular; Social, Hula Featured

Dance classes are underway at Palama. Social dancing is taught by Miss Lorraine Kaina on Monday evenings from 7 p.m. to 9 p.m.

Adult hula is always popular and this fall the class is given by Mrs. Marjorie Kekuku on Friday evenings from 7 to 8 p.m.

Children's hula lessons are on Saturdays from 8 to 12 a.m. These classes are for beginners as well as advanced.

Japanese dancing classes are also given. Miss Violet Hosokawa is the instructor and the time is Wednesdays from 4:15 to 5:15 p.m.

## A MESSAGE FROM YOUR DIRECTOR

Greetings and welcome to all Palamaites as your fall program begins.

You will be glad to know that we had a happy summer. Day camp was full, with 202 campers. Thanks go to Lorraine Kaina and her staff.

### SUMMER CAMP OK

Summer camp at Waialua had 216 campers and a good gang of counselors headed by "Winnie" Ishimoto. Mahalo to all the hardworking summer staff.

Through the medium of this paper we would like to bring our readers a bird's eye view of the many things that are now happening at Palama. Since space is tight, we are covering only a few of the activities. Come and talk to us about anything you see in the program that you think you'd like to know more about.

### MAHALO NUI LOA

Mahalo Nui Loa to the "Friends of Palama" club for making possible the last issue of "The Open Door." The Board of Trustees dug down into their pockets to make this one possible. I think if a lot of you readers would say "thank you" to the above persons, that will make them feel good. You can also thank them indirectly by telling others about Palama. Our enrollment is increasing, and many of you are helping to spread the good word. Keep up the good work. We want Palama to serve our community. Let's break out at the seams! Our monthly participation is 60,000 folks. Can we make it 100,000?



IT WAS A SUCCESS—Palama Settlement made almost \$1000 at the Jamboree. About \$600 went to help summer campers. The balance was turned over to the Pre-School to help underwrite some of their extra costs. Booths by the various departments and a swell show by Jimmy Walker and Lucky Luck made up the program.

It's Your Palama...



## Palama Presents Program For Adults, Children

The following classes are offered at Palama this fall. Come in and ask for information as to time and place. There is still room in many of the classes.

Fees are reasonable and vary from \$1.50 for children to \$2.50 and \$5.00 for adults for a 10-week period.

Many activities are offered on a membership basis only and are not listed here. Activities like woodshop for the men, arts and crafts for the children and hobbycraft for men and women. Ask about those too.

### Adult Classes

Class	Instructor
Pottery (Evening).....	Hazel Hill
Pottery (Morning).....	Hazel Hill
Pottery (Afternoon).....	Hazel Hill
Japanese Cooking .....	Shibata
Japanese Flower arrang.....	Imada
Sewing (morning and afternoon)	Matsumoto
Corsage Making .....	Leong
Oil Painting.....	Matsuoka
Lauhala Weaving .....	Matsumotoa
English (Beginners, Intermediate and Advanced) .....	Ichiyasu
English (Mixed Class) .....	Robinson
Social Dancing .....	Kaina
Tap Dancing .....	
Hula .....	Kekuku

### Children's Dancing Class

Class	Instructor
Japanese .....	Hosokawa
Hula .....	Kekuku

Unfortunately, the Music school is full but we suggest that you see John Kelly and ask him to place your name on the waiting list.

## Music School Bursts At Seams; Expansion Plans Considered

Although the Palama Settlement Music Department enrollment has been at capacity since early in September, ways and means of increasing the service of the school to the community by adding to the faculty and constructing a new classroom have been approved.

Many families are taking advantage of the opportunity to have their children enroll for piano or voice study, or classes in music appreciation at the new rate which was recently reduced from \$10.00 a month to \$5.00 a month. Included in the course of study with either voice or piano as the performing instrument are classes in music appreciation, music notation and theory, melody flutes, and as a very special feature—folk dancing.

## PALAMA'S NEW STAFFERS



**YOSHIJI ASAMI**, group work department, was born in Lahaina, Maui; attended Labainaluna school and graduated from the University of Hawaii in 1952. He majored in recreation and played football at the "U." Yoshiji is single, over 21 and no girl friend yet!



**WINIFRED ISHIMOTO**, senior group worker, is from Waialua. She has her masters from the University of Hawaii, and has been in various part-time jobs at Palama since 1948. She isn't exactly a newcomer, but we're glad she's here.



**EDWARD IONA**, yardman, is married and has five children. One boy has just returned from Korea. Four of his children are married. Edward comes to us from Hilo. The grounds show his interest. Ed knows how to make things look nice!



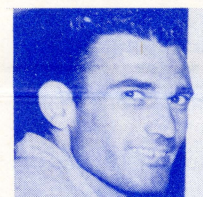
**LEOLA WILKINS**, secretary to the Music department, writes "My home is Portland, Oregon. My husband and I arrived to play flute in the Honolulu Symphony Orchestra. I am a graduate of the Eastman School of Music in Rochester, N. Y., class of '49."



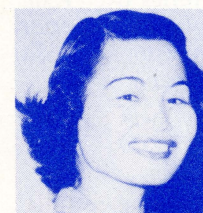
**DONALD E. WILEY** came to Honolulu in 1951 to teach music at Iolani School. Donald who was born in Hartford, Conn., had his musical education at Brown Univ. and Colorado College. Hobbies: music, reading and photography.



**JANET MURAKAMI**, membership secretary, was born in Kona, Hawaii. She went to Farrington and graduated from the Honolulu Business College in 1952. She was formerly with the Financial Security Life Insurance Co. as secretary.



**JOHN HECKFORD**, painter, is from Monroe, Louisiana. He has been in the Islands for 14 years. John is married and has two boys. Best of all, he likes to paint, and, boy! does Palama need paint!



**KAY KOKI (Mrs.)**, secretary to Miss Maki Ichiyasu, graduated from Honokaa High school, Hawaii and was previously employed on the Big Island as personnel secretary for the Honokaa Sugar Company.



**BENIGNO ORINALES**, yard man, has been in Honolulu since 1937. He comes from just outside of Manila. He is married and has five children just as Edward does.



**HELEN LOOK (Mrs.)**, pre-school teacher, is a Honolulu girl. She is a graduate of a normal school specializing in young children and was in the McKinley Day Care Center. She has charge of the older 4-year-olds.



**SHIGEKO WADA**, pre-school teacher, is from Kauai. She taught at the Crossroads Pre-School before coming to Palama. Miss Wada is in charge of the youngest group, ages three-and-a-half to 4-year-olds.

## PALAMA DRESSES UP

*Continued from page 1, Col. 3*

### MURALS WELL RECEIVED

Two of the murals are in the group work building and one in the entrance of the Physical Education department. It is

reported that scores of people visit Palama each month to see the murals.

The dormitory is scheduled for renovations also, according to the Director. Not only will the dormitory be painted and redecorated but an enlargement of dormitory facilities is planned.



# SPORTS...

## PALAMA FOOTBALL TEAM BEATS KAM, PUNAHOU

A large group of Palamaites witnessed Palama's victory over "Kam" school on September 26 at the stadium.

The exciting game resulted in a 13-7 score for Palama. Halfback William Kaae scored both touchdowns and had the high-individual yardage with 136.

Then on October 4, Palama rolled over Punahou 20-7.

Football fans saw a good example of the kind of football material available at Palama in the recent victories over Kam and Punahou. Our boys played a superior brand of ball and deserve a lot of credit as does Coach Manuel Kupahu.

## Touch Football Clinic In Full Swing At Palama

A six-man touch football clinic is being conducted at Palama for all boys between 13 and 16 years of age.

They are taught the fundamentals of the game; passing, catching a pass and punting.

A tournament will be held at the end of the clinic and the team winning the championship will be presented with an award. All those interested in learning to play football, see "Red" Kauahi in the locker rooms.

## BOYS AND GIRLS TAKE ACHIEVEMENT TESTS IN PHYSICAL DEPT.

Palama's physical department has given a series of physical achievement tests this fall.

Boys and girls up to and including 15 years have taken part. Each contestant took many different kinds of test. Some of the tests were in pull-ups, standing broad jump, 50-yard dash and baseball throw.

Another series of tests will be held in February. The person making the best time or the best distance by the end of June will receive an award and will be judged the "Boy and Girl Palama Athlete-of-the-Year."

## Teen Age Girls Enjoy Their Own Special Events at Palama

Teenage girls are having special athletic events at Palama now. Tuesday evenings at 7:00 p.m. is reserved for volleyball and a swim, while Thursday at the same time is set aside for the basketball fans and a swim.

Mrs. Lois Shlosser, whom many of you know and like, is the leader of these groups.

Call 83945 or 83947 if you like to play ball and swim and want to be with a swell gang of girls.



**PALAMA WON**—But of course! What did you expect with this kind of football material staring the other team in the face? Reading from left to right: Peter Ventura, George Tanabe, William Kaae, Alexander Spencer and George Aoki.

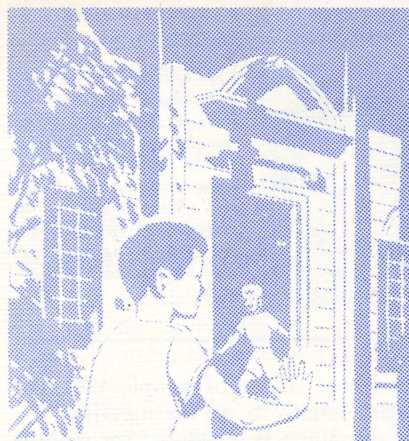
## Scrimmage Planned For Older Boys

Football for older teen age boys on Monday, Wednesday, and Friday from 4 to 6 p.m. is a regular feature now, according to Kiyoshi Matsuo, Athletic Director. Kiyoshi, who will be out on the field giving the boys pointers, has arranged some scrimmage games with the various high school junior teams.

## Too Young For Tennis? Not at Palama You're Not!

Children, ages 12 and under, who want to play tennis but are too young for regular net instruction may enter a hand tennis class held on Tuesdays and Thursdays, 3 to 5 p.m., at Palama's gym.

Hand Tennis is similar to the regular tennis game except that it is played in a gym and a net is not used.



**PALAMA SETTLEMENT**  
810 N. Vineyard St.  
Honolulu 10  
Hawaii

Sec. 36.44, P. L. & R.  
U. S. POSTAGE

**Paid**

HONOLULU, HAWAII  
PERMIT No. 90