



1998 ANNUAL REPORT PALAMA SETTLEMENT



**E KIPA MAI I PALAMA
WELCOME TO PALAMA**



**MEMBER ALOHA
UNITED WAY**



Gary Nishikawa
President
Board of Trustees

PALAMA SETTLEMENT ANNUAL MESSAGE



Bob Omura
Executive Director

For many years our Board of Trustees has been concerned about the impact Palama Settlement has on meeting the needs of its neighboring community. Several studies, conducted by State and private agencies, such as Office of Youth Services, School of Public Health of the University of Hawaii, Honolulu Police Department, Title IV-B Regional and State Planning Committee, and the State Advisory Council of the Federal Weed and Seed Committee, have pointed out the growing social problems facing the community. Among the problems noted are the high crime rate among juveniles and adults, proliferation of gangs, conflicts among rival gangs, and the growing tension caused by living in the densely populated area.

Based on the information obtained, we believe that Palama Settlement needs to:

- Become more assertive in reaching out to the community and in creating new initiatives to meet this demand.
- Strive to make Palama a true gathering place for individuals and families by creating new activities, which would give them a reason to come to Palama.

Some of the ways in which Palama Settlement will strive to meet these goals will be to continue our present programs which are meeting the needs of many of our families. Such an endeavor, though, is not without its challenges, as Palama Settlement is facing a serious reduction in government grants. For example, the Title IV-B, Family Support and Preservation grant has allowed us to administer the Palama Family Service Centers in both Mayor Wright and Kaahumanu Homes since November 1995. Unfortunately, this grant will be terminated on June 30, 1999. Thus, Palama Settlement must find other sources of funds to continue this much-needed program.

Other ways that Palama Settlement will meet its goals will be to provide services within our grounds and facilities. To this end, we have embarked on an aggressive campaign to give the community a reason to come to Palama. *E kipa mai i Palama* (Welcome to Palama) is a new program designed to invite people to Palama Settlement. Some of the major events will include musical concerts (alcohol and drug free), sporting events, and performing arts classes. Other programs include a Fathers' Day Breakfast/Brunch for fathers in the neighborhood.

The strength and financial health of our organization, which have enabled us to do so much for the community, are based on many factors.

First, the members of our Board of Trustees have shared their time, expertise, and wisdom in the development of policies and procedures, evaluation of programs, prudent management of finances, and have provided guidance in the general operations of the agency in order to keep us moving on course.

Second, our dedicated and hard working staff members, both collectively and individually, have been the underlying force behind Palama Settlement's success. They, along with hundreds of volunteers, are the ones who make things happen -- from our Pakolea sports programs and academic projects to the maintenance of our grounds and facilities.

Third, our collaborative partnerships with other social service and government agencies have resulted in enhanced services to our community. We believe that we have benefited from a number of mutually beneficial relationships with the Farrington Adult Education program, Hawaii Literacy, Queen Lili'uokalani Children's Center, Kalihi branch of the YMCA, public health nurses, area schools such as Central Middle School and McKinley High School, Honolulu Police Department, the Federal Weed and Seed Project, and many other organizations.

Finally, our success derives from the many people who support Aloha United Way, which provides a major part of our funding, as well as from the many other individuals, partnerships, corporations, trusts and foundations that continue to make Palama Settlement a regular part of their regular giving. Without their belief in what we are doing in the community and their tangible support of our efforts, Palama Settlement could not endure.

We look forward to a new millennium with renewed dedication toward the task at hand. Mahalo to all of you for the part you play in the work of Palama Settlement.

Gary Nishikawa
President

Robert Omura
Executive Director

BOARD OF TRUSTEES 1998

OFFICERS

Gary Nishikawa, President/Treasurer

Partner

DeLoitte & Touche LLP

Gary Kai, 1st Vice President

President

Continental Pacific Mortgage

Brian Suzuki, 2nd Vice President

President

Hawaii Air Cargo

Sonia Bumanglag-Freitas, 3rd Vice President

Vice President, Human Resources

Kuakini Medical System

Vernon Nakamura, Secretary

Vice President, Kalihi Branch

First Hawaiian Bank

Glenn Kimura, Past President

President

Kimura International Planning & Development

MEMBERS

June Acidera

Kalihi Branch Manager, City Bank

Leina'ala Ahu-Isa

Representative, State Capitol

Kevin S. C. Chang

Judge, Circuit Court

Mary Ann Changg

Owner, Mary Ann Changg, Photography

Claire K. Cooper

Management Consultant

Guy K. Fujimura

Secretary/Treasurer, ILWU

Gerard Jervis

Trustee, Kamehameha Schools Bishop Estate

Gerald H. Kibe

Judge, District Court, First Circuit

Benjamin Kudo

Partner, Dwyer, Imanaka, Schraf, Kudo, Meyer, Fujimoto

Richard K. C. Lau

Sr. Vice President, Territorial Savings & Loan

Patricia Loui

President, Omnitrak Group, Inc.

Donna Mercado Kim

Councilmember, City Hall

Raymond Nagata

Retired

Benjamin Saguibo

Business Manager/Secretary/Treasurer, Int'l Labor's Union #368

Gilbert Tam

Sr. Vice President, Bank of Hawaii

Fa'auuga To'oto'o

Judge, District Court, First Circuit

Eugene Uemura

Ass't Chief of Police, Honolulu Police Department

Alan Van Etten

Attorney-at-Law, Damon, Key, Leong, Kupchak, Hastert

James Westlake

Retired

Chadwick Wong

Contracts Administrator Mgr, Parsons UXB Joint Venture

Paul D. Yee

National Write Your Congressman

Robert Rath, Sr.

Trustee Emeritus

STAFF

ADMINISTRATION

Robert T. Omura, Executive Director

Rosa Sandoval, Administrator of Financial Services
Duval Dutro, Director of Support & Maintenance Services
Bette Uyeda, Fund Developer/Program Administrator*

ADMINISTRATIVE SUPPORT STAFF

Ingrid Alvarico, Executive Secretary
Amy Fujii**

CLERICAL STAFF

Rosalinda Reyes
Rosalie Yano

RECREATION DIVISION, **Vincent De Bina**, Director

Francis Akana	Leila Akana*	Norman Keawe**	Amanda Sagiao**
Richard Ribuca	Francis Baker*	Wallace Ma'ave**	Dung Tran**
Larry Sweets	Alsbet Cabrera**	Peter Pasigan*	Aaron Whyne**
Michael Tarler	Zachary Gernler**	Linda Quiocho**	Amy Yamaguchi**

COMMUNITY & NEIGHBORHOOD DIVISION, **Verna Keyes**, Program Director

PALAMA FAMILY SERVICE CENTER
Melissa Chun, Site Coordinator/Supervisor
Lynn Akana
Andy Do*
Brenda Maldonado*
Donna Rosa*
Erline Waiau*

**YOUTH & FAMILY
SUPPORT SERVICES
& CENTERS**
Andy Do*
Erline Waiau*
Norman Keawe*

**COMMUNITY
OUTREACH FOR
DRUG ABUSE &
VIOLENCE
PREVENTION**
Cornel Luca
Nellie Mataaafa*

IN-COMMUNITY TREATMENT PROGRAM, **Ed Nakamura**, Program Director

Edna Godinet	Jane Fujii**
Donna Taniguchi	Vernon Rogan*
	Sharron Thompson*

MAINTENANCE/SUPPORT SERVICES

Harry Marchadie, Supervisor
Tovia Fatu
Lorraine Grafia
Lief Anderson**
Priscilla Toyama* Retired

FACILITY ATTENDANTS

Lawrence De Soto**
Norman Keawe**
Segundo E. Pacquing**

PERFORMING ARTS INSTRUCTORS

Stella Chow-Crouch
Myrna Cleveland
"Brother Noland" Conjugaction
Leslie Omura-Jensen
Michael Yoshikawa

AFTER-SCHOOL PROGRAM

Liane Murai
Shawn Omura

INSTRUCTORS

Ethel Tom
Debbie Yoshimura

* Part-Time

** On Call

PROGRAM SERVICES

PROGRAMS	1996	1997	1998
Community & Neighborhood Development	8,000	*7,000	800
Palama Family Service Centers	450	550	575
Pakolea	650	650	650
Recreation, Planned	45,000	45,500	46,000
Recreation, Leisure	18,000	19,000	19,500
In-Community Treatment Program	80	85	90
Feeding Center	12,000	13,000	12,000
Senior Citizens	20,000	22,000	25,000
Volunteer Hours	15,000	16,000	18,000
Learning Center	800	850	875
Adult Education	280	550	550
Summer Enrichment/Summer Safari	350	350	350
Teen Program	45	45	60
After-School Program	70	70	50
Girls Residential Group Home	9	**6	6

* Includes Palama Family Service Centers

**Administrative/Staffing Start-up Only

BOARD OF TRUSTEES/develops policies, oversees the management & operation of the agency...



President Gary Nishikawa chairs full Board Meeting. Pictured also Trustee James Westlake.



President Gary Nishikawa, Richard Lau, Trustee, and staff members Bette Uyeda, Rosa Sandoval.



Bette Uyeda, reporting to the Board on Fund Raising efforts.



Trustee Brian Suzuki, Gilbert Tam, Claire Cooper & Vernon Nakamura.



Full Board meeting chaired by 1st V.P. Gary Kai.



Trustees Judge Kevin Chang, Brian Suzuki & Paul Yee listen to what is being presented.



Trustees Paul Yee, Mary Ann Changg and James Westlake listen to presentation by Vince DeBina, staff (3rd from left).



Trustees Rep. Lei Ahu Isa & Chadwick Wong also listen intently to staff presentation. Staff pictured: Melissa Chun, Verna Keyes & Bette Uyeda.



The incomparable FIJI.

'E KIPA MAI I PALAMA" - WELCOME TO PALAMA!

The incomparable Fiji kicked-off Palama's community series called "E kipa mai i Palama" or translated, it means Welcome to Palama. Under the direction of Brother Noland, (con't below)



Young and old were enthralled by Fiji's warmth, charm and exuberance and joined him on the stage, swaying with the music. There were about 750 in the audience.



Fiji's upbeat music and charisma drew many youngsters up to join him on stage.



Brother Noland presents Fiji with "Ho okupu" made by the seniors.



Youths dancing on the stage spontaneously became a part of the show as Fiji handed them the mike.

...our new community Program for the Performing Arts, Culture & Social events will give people of this neighborhood a reason to come to the Settlement and truly make this a gathering place - to come together, make new friends, have a positive experience that will help to strengthen and bond families and build a safer community.

The concerts/events are offered free to the community and supported through the generous support of individuals, businesses and our food concessions.

"E KIPA MAI I PALAMA" - WELCOME TO PALAMA STARLIGHT CONCERT SERIES



Brother Noland's Senior Ukulele class performing as a preliminary act to Fiji.



Senior Line Dancers doing their shuffle.



The always dependable, faithful and talented senior musicians also performed.



Rick Ribuca & "Company" help set up the tents for the sound system and musicians.



Part of the estimated 750 in the audience for the Fiji Concert.



Concession stands were erected by Duval Dutro, Joe Pacquing & helpers. Staff & volunteers helped cook the food and man the booths.



Chef Bob and helpers Duval Dutro, Peter Pasigan with two community volunteers.



Above, chef Leila Akana being assisted by Larry DeSoto.

HIGHLIGHTS OF MAY 28, 1998 ANNUAL BOARD DINNER MEETING

Over 175 Board of Trustees, staff and friends of Palama Settlement were present for the Annual Board of Trustees Dinner Meeting. For the past several years, the Annual Board Dinner meeting was held at various hotel dining facilities. However, with the beautification of the grounds and construction of the Garden Lanai by the Garden Club of Honolulu, the Annual Board Dinner Meeting site has moved to where it belongs - back at the Settlement Dining Facilities and Garden.



President Elect Gary Nishikawa presents Community & Neighborhood Service Award to Jean Ma'ae.

Outgoing trustees Vernon Hirata, Joel Maimon, and George Okuhara as well as past president Glen Kimura were recognized for the contributions to the Settlement. Six new Trustees were elected to the Board: June Acidera (City Bank); Mary Ann Changg (Owner Mary Ann Changg, Photography); Richard Lau (Sr. VP, Territorial Savings); Alan Van Etten (Damon, Key, Leong, Kupchak, Hastert); James Westlake (Hawaii Construction Industry Assn.); & Paul Yee (National Write Your Congressman). Gary Nishikawa of DeLoitte & Touche, LLP was elected President.



Bette Uyeda receives 1997 Employee of the Year Award.



Ben Saguibo receives award from Vernon Hirata for the International Laborer's Union #368 work at Palama.



Trustee (Representative) Lei Isa presents the Hanohano boys with Educational Scholarship checks.



Bob Omura presents Bob Rath Appreciation

Certificate for their (Jackie's & Bob) work in the archives



1997 Outstanding Volunteer Award to George & Rhonda Hanohano.



Vernon Hirata, past president presenting Appreciation Award to the Garden Club of Honolulu, Evelyn Brodie and Jean Thomas.



Special recognition was also given to the above volunteers: Jan Garce, Melanie Terry, John Kapua, Nancy Kang, Ken Kang, Clement Young & Betty Kotani.



"HEALING HULA" under the leadership of Jean Ma'ae, members of the "Healing Hula" group performed at the Board Dinner Meeting. It is called healing hula because members who belong to the group have some kind of ailment and thru dancing, are able to find some kind of relief.



Gary Nishikawa receiving Appreciation Plaque for serving as 1st Vice-president the past year.



Ashile Dutro honored as top female Pakolea participant of the Year.



Representative Lei Ahu Isa, Chair of Scholarship committee congratulates Blaine Dutro. Blaine was awarded the Leland Blackfield Educational Scholarship Award.

Glenn Kimura receives commendation from State Legislature from Rep. Lei Ahu Isa.



Japanese Junior Chamber.



Oahu Construction.

COMMUNITY SERVICE AWARDS were given to the Japanese Junior Chamber of Commerce and the Oahu Contractor's Association for help on the "Day of Caring".

PALAMA FAMILY SERVICE CENTERS AT MAYOR WRIGHT & KAAHUMANU HOMES



Gwen Palmer (PHN), Melissa Chun and Lynn Akana provide coverage for their display during dedication of Weed & Seed Police Sub-station.



Representative & Trustee Lei Ahu Isa with Tovia Fatu and Housing Director and staff.



Ka'ahumanu Spring Break Program was conducted by the Manoa Valley Church.



Theresa Cummings, President of Mayor Wright Tenants Assn., Tovia Fatu (V.P.) man the association booth during fair.



Leaders of the spring break program lead discussion on food - likes and dislikes; conduct bible story games and other group activities.



The AFL-CIO Union members distributed food items to Ka'ahumanu and Mayor Wright Homes.

SUMMER FUN & ENRICHMENT PROGRAM



Children having lunch in the Lanai Garden.



Various classes performed during the closing event.



A combined class performance for parents.



Parents enjoying their children's handiwork.

Approximately 275 children, grades kindergarten to the 5th grade participated in the Summer Fun & Enrichment Program.

The children were involved in a variety of activities that included: arts & crafts, swimming, learning basic computer skills, excursions, ukulele & camping.



Jean Ma'ae, Arts and Crafts Instructor assisted by Alfred Furtado.



Parents and guests watching children from bleachers.



Children singing "B-I-N-G-O was His Name" with Bob leading.

CAMPING: DIFFERENT TENTS FOR DIFFERENT CHILDREN = FUN



One big group tent and several little ones.



Children taking a breather and relaxing in "big tent" after lunch.



"Well,... Shall we get up and play or relax some more?"



Little ones needed the security of home close by.

CAMPING! The summer fun children had a two nite camp over on the grounds of the Settlement. Most of the children enjoyed this experience. ALL the parents thought this was a great, great camp - to have the kids sleep over for two nites!

Here we come Camp Palama Uka!!!



Yup, this is my tent! Insect proof.



"Hello! How you guys doin' in your tent?"



Da cooks Francis Akana, Joe & Sandy Pacquing were busy cooking and feeding the campers!

SUMMER SAFARI: AN ACTIVITY ORIENTED FOR TEENS

Summer is still time for relaxation and fun for many teens in the Summer Safari program. This year's program drew teens from Mayor Wright, Kuhio Park Terrace and Ka'ahumanu Homes.

Under the direction of Georgianne Chock, two assistants and timely help from her husband, Stan, the teens had a very busy safari and exhaustive summer experience that included arts ...

(continued on next page)



Georgianne and husband, Stanley at Teen Camp, Bellows AFB.



Teens line up for dinner, prepared and served by another group of campers.



New friendships and time for group bonding.



Teens and leader playing volleyball in front of their camp site.



Grace before dinner.



Campfire and roasting marshmallows.



Dinner time after a long swim at the beach.

SUMMER TEENS... continued

Work cooperatively, bond together and make decisions.

Camping was one of their favorite activities. They always came home tired and exhausted but ready to go on the next camping trip. The program ended with a luau prepared and served by the teens. Guests included parents & staff.



Stan and Georgianna chat with Bette during the teens closing Luau luncheon.

(cont) & crafts, sports, music, social skill development, journal writing, excursions, swimming, hiking and group exercises that helped them.



Guests being served by teens at the Luau luncheon.



Lunch was a bargain and many staff & seniors took advantage of the price & delicious food.



The most important guests were their parents, who spent the time enjoying the lunch and entertainment by the teens.



The teens spent several hours practicing their skits and music/ukulele classes from Brother Noland in preparation for this event. The teens are seen performing for their guests and were warmly applauded for their efforts.



Georgianna, using the photos, described the teens activities for the guests.

FALL TIME IS "FOOTBALL FEVER TIME"

Football season starts August 1 - with weigh-ins and two weeks of conditioning. Contact begins the third week and the first game is in mid-September. Late sign-ups have mandatory 2 weeks training.



Boys jogging around the field first day of practice.



First "pep talk" with Coaches. Anxious parents in the background.



Palama runner being pushed out after a good gain.



Termite defensive team waiting on the sidelines.



Co-captain Micah Dutro wins toss and elects to receive the kick-off.



Micah Dutro, who plays quarterback and running back heads for the goal line.



Midget team player being tackled by opponents.



Waterboys doing their job!

CHEERLEADERS



Practice makes perfect. That's what the girls did...practice, practice, practice! And, when not, in the Learning Center.



Melanie Terry and Jan Garce having a discussion with the cheerleaders during a sleep-over at Palama Settlement. Sleepovers gave the team time to bond and work together.

Melanie Terry and Jan Garce are committed, dedicated, loyal and hard working volunteer cheerleader instructors. This past year, Melanie, an employee of GTE Hawaiian Tel was also able to get a grant of \$500 from her employer for the Cheerleading Program.

Melanie and Jan are also coaches for the girls basketball & volleyball teams.



The Pee Wee girls took 2nd place in their competition.



The Pee Wee Cheerleaders took 2nd place in the Midget division.

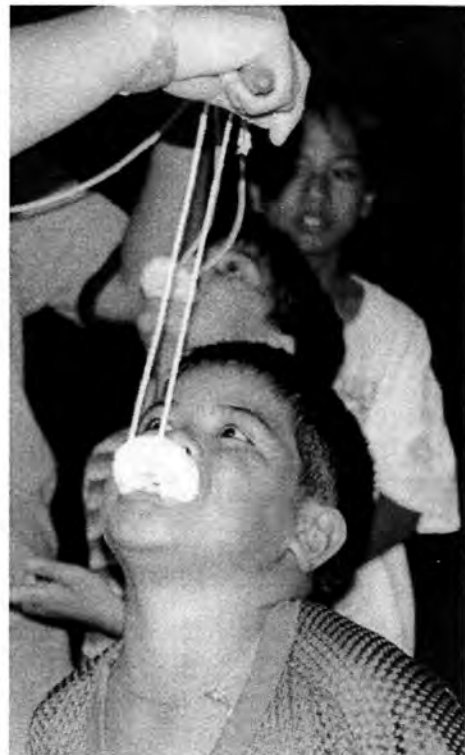


The Termite and Pee Wee Cheerleaders performing at half-time.



The Termite Cheerleaders took 1st place in their competition.

HALLOWEEN...A TIME FOR GHOSTS, GOBLINS, FUNNY COSTUMES



Above, Afu getting the costume contest participant's attention.

The Hanging Donut eating contest. At least there's something to eat!

The COMMUNITY HALLOWEEN EVENT DREW hundreds of participants from the surrounding community. The main attraction for the event was the Halloween Costume Contest. Winners were given a bag full of prizes.

Contestants hold up their numbers so judges can identify and rate them on the scoring sheet.

The Halloween Event was coordinated by Verna Keyes, Director of Community & Neighborhood Development and staff from the Kalihi Family Center and Youth Service projects.



"Face Paints" manned by volunteers and popular with the children.



Judges looked for appropriateness, originality & creativity. And smiles.

"MAKE A DIFFERENCE DAY" AND "DAY OF CARING"



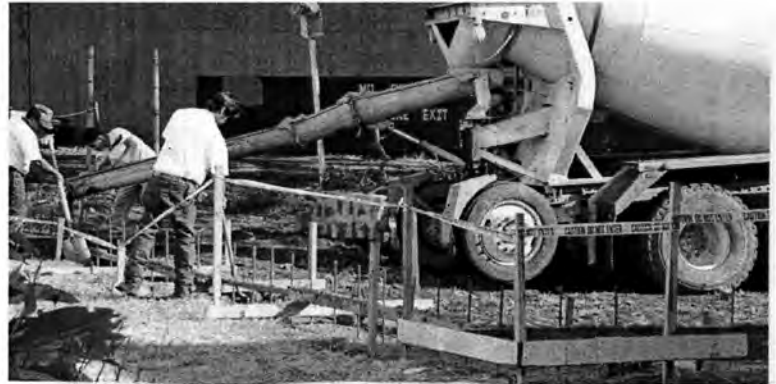
Men from Wally's flooring re-tiling room 206.



Chester Hughes from the Victoria Ward Ltd, watches his men put the finishing touches on the wall.

A number of work projects throughout the campus and office sites were conducted by organizations, community and staff volunteers.

- * Staff cleaned various rooms & offices.
- * Wally Miura and Wally's Flooring contributed supplies and labor to install carpeting and vinyl tiles for the Palama Family Service Office and re-tiled room 206 of the main administration building.
- * The Kamehameha Lions Club had a garden beautification project at our Mayor Wright offices.



Victoria Ward, Ltd. provided manpower to construct retaining wall for parking area.



James Westlake, Trustee, Bette Uyeda, Chester Hughes & his workers along with representatives from AUW celebrate the completion of the wall with a luncheon.



Kamehameha Lions Club working on the Tropical Garden at Mayor Wright Office.



President Vernon Nakamura of the Kamehameha Lions Club addressing the membership for a job well done.



Lion members installing the grass guard.

PALAMA'S WORK DAY JUST HAPPENED TO BE "EARTH DAY"

VOLUNTEERS from all walks of life representing a tenant, Na Loio Na Kanaka, members of Pastor Rick's church, Ted Lubong and the Grace Bible Church, the Judiciary, staff and participants and parents from the aquatic club participated in Palama's "Day of Caring." There were over 70 participants assigned to various projects throughout the campus.



The Judiciary personnel and aquatic club parents & children painted the swimming pool area.

Bette Uyeda served as overall chair, assisted by Verna Keyes (coordinated volunteers from the Judiciary & supervised "weed cutting crew"). Joe Pacquing supervised painting, and Duval Dutro supervised the loading and transporting of gravel. Every one was very gratified with the efforts at the end of the day.



Staff & volunteers from Na Loio Na Kanaka did general cleaning around the Tenant Building.



Rick Ribuca and his volunteers from church, the Judiciary and staff scrubbed the entire 1st floor of the Rath building, including the Game Room.



Tovia Fatu was in charge of the grounds beautification project fronting Palama Street. He was assisted by Norman Keawe and Peter Pasigan.



"After" shot show marked improvement. Judiciary volunteer proudly poses with the almost complete project. Duval Dutro, staff and judiciary volunteers transported gravel from gym area.



"Before" shot of beautification project. Staff & Judiciary volunteers used pick and muscle power to dig into the dry/hard soil.

VOLUNTEER RECOGNITION LUNCHEON



Pakolea Football coaches, tutors, team parents and senior program volunteers in jovial mood.



Ummmmm...the food is good! Senior Volunteers finally get to sit down and eat.



Jane Lee, volunteer in the administration office enjoying a pleasant discussion with Wally Miura.



Volunteers were really appreciative of the recognition and appreciation given to them and were all in good spirits.

The first ever Volunteer Recognition Luncheon was held at the Pagoda Restaurant with over 60 people attending. This event will be held twice a year to accommodate all our volunteers.



Senior Nutrition Program Volunteers in reflective mood watching carps.

Bette Uyeda, coordinator of the volunteer luncheon, is ready to give a grand prize away.



Bette Uyeda was assisted by Melissa Chun, Program Manager for Palama Family Service Center.



VINCE DE BINA leads his Senior Country Line Dancers at the Senior Christmas Party held at the Pagoda Hotel.

The event held every year is a merry & joyous occasion.



Hula Dancers under the direction of Myrna Cleveland, adult education hula instructor.

Below, senior line dancers at their graduation ceremony dance.



LEFT & BELOW: Christmas at Palama. Santa handing out Christmas presents to children. Palama Serenaders entertain at the "Lighting Ceremony".



Palama Serenaders



Samoan children's church choir singing one of many carols during the Community Christmas event.



Trustee Bob Rath and Palama Staff gratefully accepted \$7,000 check from the Hawaii Hotel Association. Bette Uyeda coordinated Palama's participation in Charity Work.

SPECIAL GIFTS, HELP AND GOODS to Palama Settlement touch and make a difference for hundreds of youths in this community. Some of the gifts received were

- * \$20,000 from the NFL to improve the football field.
- * \$11,500 from the William W. Saunders Trust Fund for our Pakolea Program.
- * \$5,000 from Tesoro Hawaii to purchase computers for our Computer Room.
- * \$1,500 from the National Honor Society, Hawaii Baptist Academy for computers.

And the list goes on...



Trustee Claire Cooper and BHP/Tesoro VP Human Services presents check to Bob Omura.



Joan Takano & volunteers from the AFL-CIO pass out snacks and ice cream during Christmas Event for the Community.

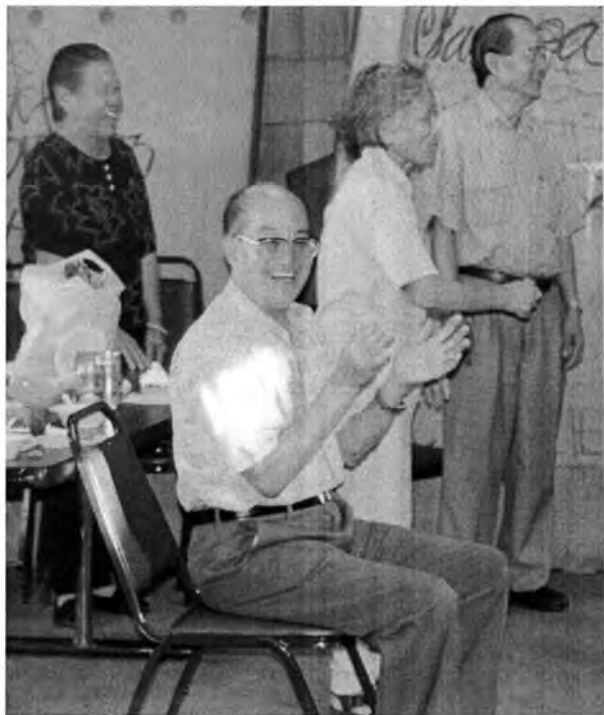


The men from Charlie Company give a hand to Santa from "North Pole".



Keith Kaneshiro, past Public Safety Director and Ted Sakai, present Director, present a lucky prize to a young girl.

FARRINGTON ADULT EDUCATION/SOCIAL - PERFORMING ARTS PROGRAM



John Chiang encouraging his pupils during the bag race across the room.



COMBINED CITIZENSHIP CLASSES taught by Amy Fu and John Chiang having fun during their Christmas celebration.



Amy Fu, left, in jovial mood at the class Christmas Party. There are a total of 5 Citizenship classes through the week with approximately 100 students. One class meets on the weekend.



Brother Noland with his ukulele class.



The Farrington Community Adult Program also provides instructors for the In-Community Treatment Program, the Afterschool Tutoring & Social Program, The Performing Arts Program, the seniors shirt design, hula and line dancing classes. They also fund the piano program.

LEFT: Leaders Shawn Omura and Lianne Murai with their Afterschool class.



Vince DeBina with Pakolea Staff visiting Sand Island site with Marvin Wong, Volunteer Special Projects Officer for the Governor.

FUTURE HOME OF THE PALAMA SCORPIONS will be located at the newly created Baseball complex on Sand Island. Half of the basefield will be converted for football during the football season.

This year there were three football teams representing Palama in the Oahu Youth Sports League. All three teams had very successful seasons. The Pee Wee team had a perfect 10-0 record and won the division championship.

The three teams also participated in the Pan Am Friendship Bowl held at the Aloha Stadium. The 1997 President's Award went to: James Cambras and Ashile Dutro.



Willis, Palama Pony Basketball player prepares to take a free shot.



Ashile Dutro shoots a free throw. The team lost this exciting game held at the Palama gym by 1 point!



Top to bottom: Willie Talavioa, Irvan M. Hao, Chester Pacquing, Sherwin Agapay, Burt Calaycay, James Babras, Tyrone Laufou, Jay Ocol & Shawn Pacquing.

PALAMA'S PONY BASKETBALL team coached by Joe Pacquing took 2nd place in the PAL Midget Basketball League.

The basketball team also took a trip to Kona and took 1st place in the "March Madness '99 Tournament". Winning the tournament was an exciting finish to a very successful season!



The Pony Midget Basketball team with coach Joe Pacquing and Team Mom Mrs. Pacquing proudly displaying their individual and team trophies.

AQUATICS



Palama Settlement participated in the USGA Aquatics Swim Meets through the Kamehameha Aquatics Swim Club.

Approximately 20 children participated in the swim club. Today, there is a growing interest in competitive swimming. Sometimes with so many activities and options to the Settlement's participants, sometimes it is difficult to stay focused on one or two activities - especially when it requires dedication, commitment and rigorous practice sessions.

Palama also has a "Learn to Swim" program for the elementary schools in this community.

Swim meet at the Manoa Swimming Pool.



Learn-to-Swim Program for elementary schools in the surrounding community.

Assistant Rick Ribuca observes swimmers' ability to get out of the pool.



Chai Tarler (not seen) works with the intermediate level in basic kicking.



A number of seniors have expressed a desire to have a swimming program for them. Chai, Aquatics Supervisor, goes through a series of stretching exercises before going into the water.

EASTER/SPRING FESTIVAL



A child cautiously approaches Mr. Bunny, deciding whether it was safe to accept the candy.

Once again, hundreds of children (and parents) flocked to the Settlement to participate in the Easter/Spring Activities. Approximately 1,200 eggs were hidden in the tall grass (thanks to the rain).



Children rush up to Mr. Bunny for the "goodies".



Maile Kanemaru, Coordinator for the Weed & Seed Program, lends a helping hand to the children. The paper plates will be used to make their bonnets.



Three winners gleefully show-off their "Easter Bonnets" that they made. Everyone had to make their own bonnet.



Volunteers distribute the prizes to the ones with the best Easter Bonnet.



"Don't I win a prize too?"

EASTER continued...



Children and parents lined the field ready for the egg hunt.

Approximately 600 children rushed into the field when the signal was given. Of course, there were a few who had taken a slight head start.

Vince DeBina, Rec. Director: "Now hear this...everybody wait for the signal, line up...and no parents on the field!"



Ooops! I think I found something here!

"Why is the grass so long? I know I saw the man hide the egg here!"



"Keep looking! Keep looking! You'll find one soon!!"
"Mommy, are there other things in this tall grass--like snakes?"



Three little boys with the looks of confidence.
"At least we got our share!"

THE PARENT PROJECT



After returning from a trainer's certification workshop in Hilo, Hawaii, Melissa Chun decided to put her newly learned skills to work. Here she is shown conducting a Parent Project at Palama Settlement. She was assisted by Robyn Faumuina of PACT. The Parent Project is one of two projects being funded by the JUNIOR LEAGUE OF HONOLULU. The parents learn strategies on dealing with problematic children & to develop effective means of communication. Child care was provided.

Melissa Chun and Robyn addressing parents.



Lynn Akana, Palama Family Center Office Clerk and "Outstanding Student in Office Administration".



Youths shooting pool in the Game Room. The Game Room (LELAND BLACKFIELD ACTIVITY CENTER) is an important program activity that serves to keep youngsters away from negative influences, prevent juvenile delinquency while providing a healthy & positive environment.



Some seniors decided to dance in the corner - away from the crowd and seemed to have just an enjoyable time.

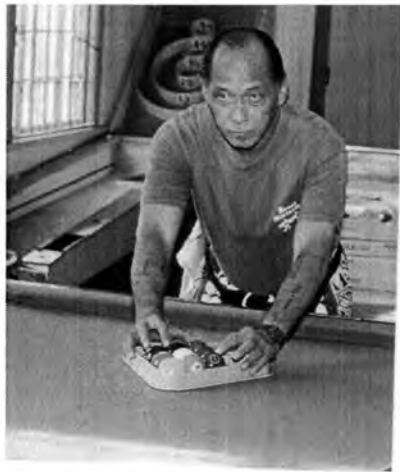


Verna Keyes, Larry Sweet & Bette Uyeda attended an "Outcomes" Workshop conducted by Lilly Domingo. Within a couple of years, all Budget Requests to the AUW will have to be based on "Outcome" measures.



Katrina Dick 1st receipient of a college scholarship from Palama Settlement. Katrina, an excellent student at the University of Hawaii, taught in the Settlement's performing arts program. She taught ballet, street dancing; she also was our aerobics instructor.

She will be attending Colorado State University with the hopes of getting a Master's degree in physical therapy.



Francis Akana racks the balls for the "Turkey Shoot" tournament.



Palama Settlement was host to the East-West Ping Pong Tournament. Over a hundred ping-pong enthusiasts from Japan went against members of the Hawaii Ping Pong club.



Youths stand below the newly installed plaque identifying the outdoor basketball court as the "ALFRED L. CASTLE, JUNIOR MEMORIAL PLAY COURTS".



Staff from the Hawaii Correctional Facility help to distribute Christmas gift bags to the children and youth. There were over 800 children + parents at the Community Christmas Festival at Palama.



CLEMENT YOUNG, volunteer Tai Chi instructor goes through his routine with his advance class in the Multi-Purpose Room located on the 2nd floor of the gymnasium.



While in the gym lanai, the beginner's class is taught by Judith Lee.

BELOW: Seniors "jamming" during free time. Many of the seniors are very talented musicians and love to play and sing whenever there is an opportunity.

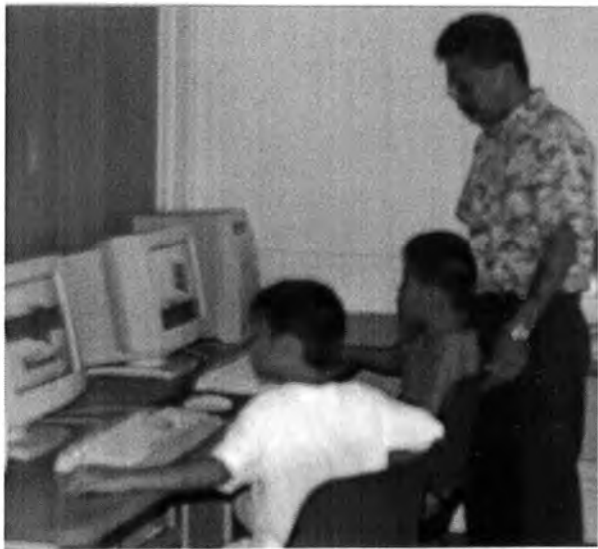
BOTTOM: THE IN-COMMUNITY TREATMENT PROGRAM is for teens referred by the Family Court, 1st Circuit. There are between 20-25 teens in the program at any one time. ICTP is a day treatment and alternative education program. The academic program is individualized to the student's academic grade level potential which includes English, Math, History and other subjects. Students learn basic key boarding and computer skills in the Computer Room; participate in an outdoor camping program, excursions and special topical classes such as good grooming, health and dating.



Sharron Thompson in grooming demonstration.



Blindfolded ICTP teens in group exercise learn how to develop trust during field trip.



Cornell Lucas helping two youths from Mayor Wright.



Shawn Omura giving a hand to children in the After School Program.



Sharron Thompson, Educational Instructor in the ICTP Program assisting students on the use of the computers.

Six new Computers and two printers were recently purchased for our Computer Room. This gift was made possible through TESORO-HAWAII and National Honor Society of the HAWAII BAPTIST ACADEMY.

The computers will be utilized by our ICTP Program.



ICTP students in the Learning Center and individual study desks.



Verna Saranillio leading the Seniors in exercise.

As part of their morning ritual, Line Dancers spend the first hour of the day exercising. The exercise program called LOCTUNG is led by Verna Saranillio.



Senior and LOCTUNG exercise on the Junior Play Courts.

STRAUB ASTHMA FAIR



Jacky & Bob Rath happily manned the Straub Asthma Fair Booth. Bob also serves on the Board of Straub Foundation.



Asthma Fair participant in ball throwing contest.

THE UNITED NEIGHBORHOOD CONFERENCE

Three staff members attended the United Neighborhood Conference held in New York City in September 1998. The conference theme centered on the role of the Settlement Houses and Community Building.

Our contingent attended the conference to learn about the role of the settlement houses and its impact on building a stronger community, and to examine the merits of joining a national organization.

To make the trip worthwhile, we left a day earlier to have an extensive visit and tour of the Boys (& Girls) Harbor Community School.



Boys Harbor School Educational Director shares information with Bette & Verna.

One of the highlights of the conference was a tour of a number of Settlement Houses in the Bronx in N.Y.



Visiting a pre-school class in Mott Haven Community Center.





"SOLJAH" Teen Club having a great time "rockin" & "rollin" at their teen dance last fall. They had a concession booth to help raise funds for this dance.



Teen enjoys a relaxing time in Leland Blackfield Drop-In Center.



Leslie Omura-Jensen pose with her class after a Christmas Piano Recital at Maluhia Home. Since this was such a delightful experience entertaining the elderly "shut-ins" she plans to return to Maluhia Home next Christmas.

PIANO: A PERFORMING ARTS program supported by the Farrington Community School for Adults. The program is open to adults & children, class and private lessons.

Classes are M-F in the afternoons and on Saturday morning, 8:00 to 1:00 pm.

Stella Chow teaches at Palama Settlement M-Th and Leslie Omura-Jensen teaches on Saturdays. She also takes students at her home.



Youngsters enjoying a game of pool in the Leland Blackfield Center Activity Room. The Game Room is supported by Mrs. Cecilia Blackfield, the Blackfield family and friends. An Educational Scholarship Program is also funded by the Family and friends.



Stella Chow-Crouch patiently instructs a student.

PALAMA SETTLEMENT

Statements of Financial Position December 31, 1998*

ASSETS

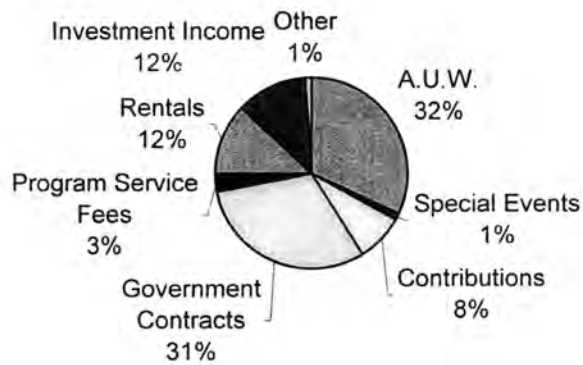
Cash and cash equivalents	\$	135,566
Receivables, net of allowance for doubtful accounts	\$	35,862
Prepaid expenses and others	\$	36,805
Total Current Assets	\$	208,233
Certificate of Deposit	\$	1,000,000
Marketable Securities	\$	1,992,784
Land, buildings and Improvements, and equipment, net of accumulated depreciation	\$	2,671,933
Total Assets	\$	5,872,950

LIABILITIES AND NET ASSETS

Current Liabilities		
Account Payables	\$	18,525
Accrued Expenses	\$	244,126
Accrued Vacation	\$	56,075
Refundable Advance	\$	16,385
Total Current Liabilities	\$	335,111
Net Assets		
Unrestricted	\$	3,077,153
Temporarily Restricted	\$	358,944
Permanently Restricted	\$	2,101,742
Total Net Assets	\$	5,537,839
Total Liabilities and Net Assets	\$	5,872,950

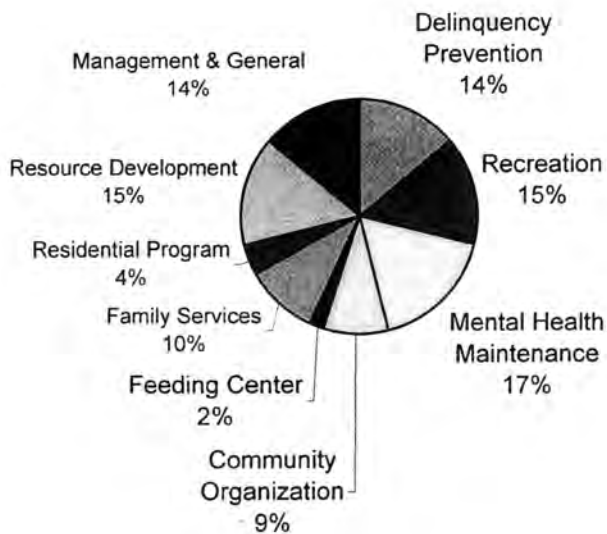
* Unaudited

INCOME



- A.U.W.
- Special Events
- Contributions
- Government Contracts
- Program Service Fees
- Rentals
- Investment Income
- Other

EXPENSES



- Delinquency Prevention
- Recreation
- Mental Health Maintenance
- Community Organization
- Feeding Center
- Family Services
- Residential Program
- Resource Development
- Management & General