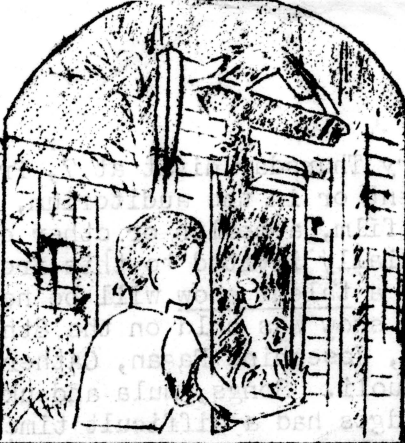


PALAMA

OPEN



DOOR

Published monthly by Palama  
Settlement - Your friendly  
Neighborhood House  
810 No. Vineyard Street

VOL. 1, NO. 1

Honolulu, Hawaii

February 1951

**FLASH!** Palama's "Open Door" has made its appearance again! This time, however, it will be less formal, a mimeographed sheet of paper, but with news - the chewey kind and plenty of it. We want all the people in the neighborhood to know just what's going on at the Settlement. Why a Group Work department? Besides piano, what does the Music School offer? What's "cookin'" in the Pre-School and, last but not the least, what goes, in the Athletic Department? People pass the Settlement or hear about it almost daily but how many know of all the goings-on at the Settlement. The Palama "OPEN DOOR" is published especially to keep you in touch with the activities and events and with hopes that you, too, will soon be an active participant through the OPEN DOOR.....

#### News of the GROUP WORK DEPARTMENT

The teen-age dramatics group, under the leadership of Miss Olive Casscells, is hard at work on a series of three one-act plays to be presented to the public sometime this month. The plays, while short, are humorous and are a "must" for career minded teen-agers. No admission will be charged. Be on the alert for exact dates and do not miss the chance to see this hard-working group in action.

Under joint auspices of the American Red Cross, Hawaii Chapter and Palama, the Mother and Child Care class is now enjoying its final week. By popular demand from mothers and others in the neighborhood, this class was started on January 26 with an enrollment of 24 mothers and prospective mothers. From pre-natal to post-natal care, nutrition, sanitation, how to feed a baby, etc. are covered in this course by Mrs. Davis, a registered nurse. As an added feature to the course, baby-sitters are supplied by Palama. Two extra sessions were added to the course which meets on Wednesdays and Fridays from 9:30 to 11:30 a.m. On Friday morning, Feb. 16 at 9:30 Mrs. Able, Chief of the Bureau of Nutrition, spoke. Her talk included budget hints for meal planning and other items interesting to the homemaker who must plan meals in these days of high prices. The second extra session on Wednesday, Feb. 21 will show a film "Breast Self Examination" sponsored by the local Cancer Society. An informed person on the subject of cancer will be present and will be glad to answer any or all questions that may arise. It is hoped that many women will be present on the above two dates.

"We're campers, we're campers, we're long ways from home..." is the song most of the members of the Rainbow Club are singing these days. Little wonder, for the club is planning to go on a camping trip out to Palama-by-the-Sea Camp in Waialua the first weekend in March. For some of the members, this will be their first camping experience while others are "old hands" when it comes to "roughing it in the open". The Rainbow Club is comprised of intermediate girls ranging from 10 to 14 yrs. Their advisor is Miss Winifred Ishimoto, more popularly known as "Winnie", a student at the University of Hawaii. The camping trip sounds like fun for on the program are: swimming, exploring near the camp, campfire, sports and games.

Accidents will occur despite the best of precautions. The knowledge of knowing what to do and what not to do before the doctor's arrival may be the difference between life and death. With this in mind, a first-aid course has been started at Palama. Mr. Charles Shigemura, a volunteer instructor of the American Red Cross is in charge of the class. To date, 34 persons, most of whom are mothers and fathers, are enrolled in the class. Since the favorable ratio of instructor-students is 1-30 registration is closed for this first class. However, should there be more parents or others interested in taking this course, a second course may be arranged later. Call 83945 and leave your name and address with the telephone operator if you are interested. Those completing the course are eligible for Red-Cross first aid certificates; that is, after passing the examination at the end of the course. Incidentally, if you see the staff of Palama wandering about the next few weeks with slings and various bandages, do not be alarmed for they are merely practicing. Practice makes perfect, you know.....

For those who weren't aware, every Thursday night at 7, free movies are shown either on the front lawn of the Settlement or in the auditorium, depending on the weatherman's forecast. Usually, a sport film, a health or other educational film and a cartoon are shown. Everyone is cordially invited to this free activity. In addition, the first Thursday of each month, a talent show will be held in conjunction with the movies. For this month, a talent show was held on the 8th. The following contestants performed: Larry Yamashita, Josephine Pagan, Catherine Saballa, Lillian Martiaz, Blaise Lai and Winona Hauoli. Songs, hula and ukulele strumming were done by the above contestants. The judges had a difficult time choosing the winner but finally picked 13 yr old Josephine Pagan for her boogie woogie on the ukulele. Names of the judges are: Mr. Clarence Young (a parent from the audience) Alexander Roman (representing grade school age) Miss Jade Tom (a teen-age judge) and Miss Margaret Iizaki, (representing the staff) The Settlement Store, with Mr. Pang as manager, donated a bag of groceries to the winner. The Group Work Department wishes to thank the Settlement Store for its wonderful kokua! The next talent show is scheduled for Thursday, March 1st. All those wishing to enter the contest are urged to contact either Mr. Pat Oka or Miss Casscells at the Settlement.

-----00000000000000000000-----  
PALAMA PRE-SCHOOL REPORTING

The Palama Pre-School enjoyed a busy month of January as you can see: First, excursion trips were taken to the University Farm and to the Palama Fire Station. At the farm, the children saw cows, pigs, sheep, calves and other animals rarely to be seen in the city. The children were greatly surprised to see that the real animals were so large in comparison with the wooden and picture animals they see in their classrooms.

On January 23, "Jack and the Beanstalk" a well-known play, was presented to the children of Palama Pre-school as well as to the Na Lei Kindergarten and Liliha Day Care Center by the Junior League of Honolulu. The play was held in the Palama auditorium. The Palama Pre-School is greatly indebted to the Junior League for their play. They have been most generous in the past also.

A Mother's Meeting was held on January 26 at 7:30 p.m. at the pre-school pavilion. A film called "Learning by Experience" was shown. All those who attended the meeting remarked that they learned a great deal from the film and found it very helpful in understanding children at play.

For Valentines, the children made their own Valentine cards and worked hard on individual napkins for the Valentine party held at the school. One can visualize what cute little cards and napkins were made by their tiny busy hands! February's excursion was to Kewalo basin. There at the basin, the children took in many interesting sights and activities. Some of the fishermen were preparing to go out to sea while others were coming in with their haul of fishes. A man was kind enough to show the children a baracuda. He also pointed out babies of the hammer-head shark to the children. Summary: Children are all playing boats and fishermen these days at the school!

A meeting is planned next month to discuss the oncoming bazaar to be held at the pre-school. All parents and interested friends of Palama Pre-school are reminded to watch for the date.

-----00000000000000000000-----  
**REMEMBER THIS DATE:** Wednesday, February 21 HOLIDAY HOP (A dance) - opening of Palama Canteen. Will be held in Music School Auditorium. 7:30-11:30 PM  
Membership charge 15¢ per person.

Things are not perfected overnight. This being the first paper to be circulated to friends and folks near and around Palama, there is bound to be a feeling of "something not quite complete!!" We ask all our readers to be patient with us and as time goes by and our experiences mount, we are sure our "OPEN DOOR" will improve. Due to many reasons, The Music School and Athletic Department were not able to include their news in this issue. However, the next issue will have as many news of the various departments of the Settlement, so watch for them. The "OPEN DOOR" is open in more ways than one. Let us know of any suggestions you readers may have regarding this paper. If it is for improvement, we want to hear of it. If there are criticisms, let us know of them. The "OPEN DOOR" has made a start. We shall see you monthly hereafter.....